



MONTHLY MEMBERSHIP PROGRESS REPORT

District 27 B1

Results as of: 05/31/2018

GMT: MICHAEL MOLENDIA

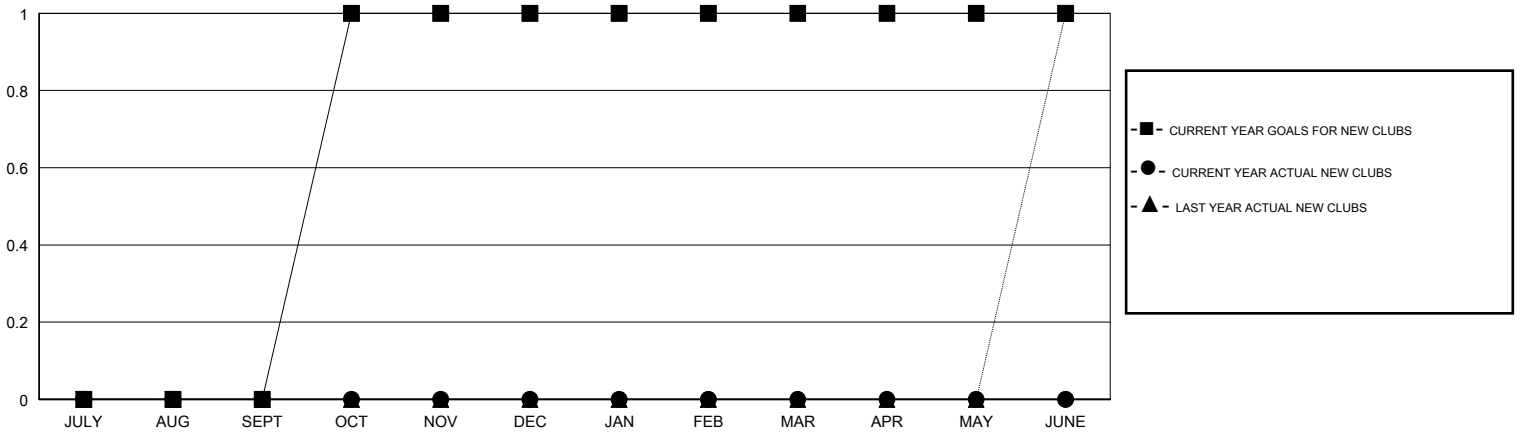
LOCATION WISCONSIN

GMT CA

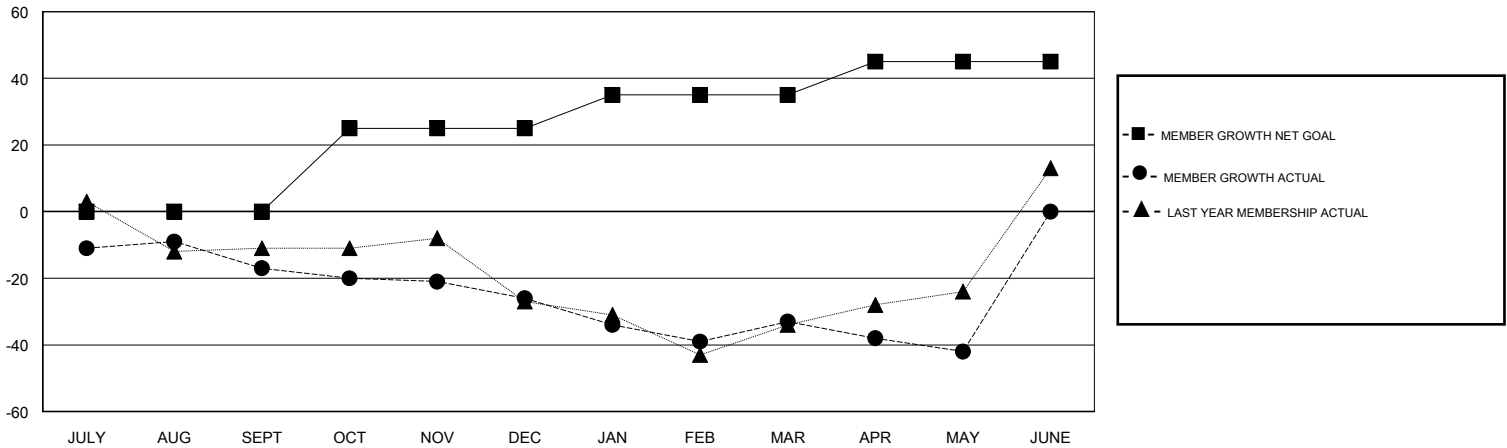
Clubs			
RESULTS FOR 2017-2018			
QUARTER	NEW CLUB GOAL	NEW CLUBS	DROPPED CLUBS
JULY/AUG/SEPT	0	0	0
OCT/NOV/DEC	1	0	0
JAN/FEB/MAR	0	0	0
APR/MAY/JUNE	0	0	0

Members			
RESULTS FOR 2017-2018			
QUARTER	MEMBER GROWTH NET GOAL	MEMBER GROWTH ACTUAL	DROPPED MEMBERS ACTUAL (including transfers)
JULY/AUG/SEPT	0	28	40
OCT/NOV/DEC	25	49	53
JAN/FEB/MAR	10	30	37
APR/MAY/JUNE	10	28	35

GOALS AND ACTUAL NEW CLUBS CUMULATIVE



GOALS AND ACTUAL MEMBERS CUMULATIVE



DROPPED CLUBS: 0

46 CLUBS OF 69 ADDED 1 OR MORE NEW MEMBERS

GENDER DISTRIBUTION	
MALE	1,555 (78.58%)
FEMALE	424 (21.42%)
Women Percentage Fiscal Year Goal: 22%	

DROPPED MEMBERS	
DECEASED	36
CLUB CANCELLED	0
OTHER	129
TOTAL	165

[CLICK HERE FOR CUMULATIVE MEMBERSHIP DATA](#)

TOTAL FAMILY UNIT MEMBERS	359
FAMILY MEMBERS PAYING HALF DUES	183